

Impact & Sustainability of RIs

Ivana Versic, Ron Dekker

14 November 2018



cessda.eu



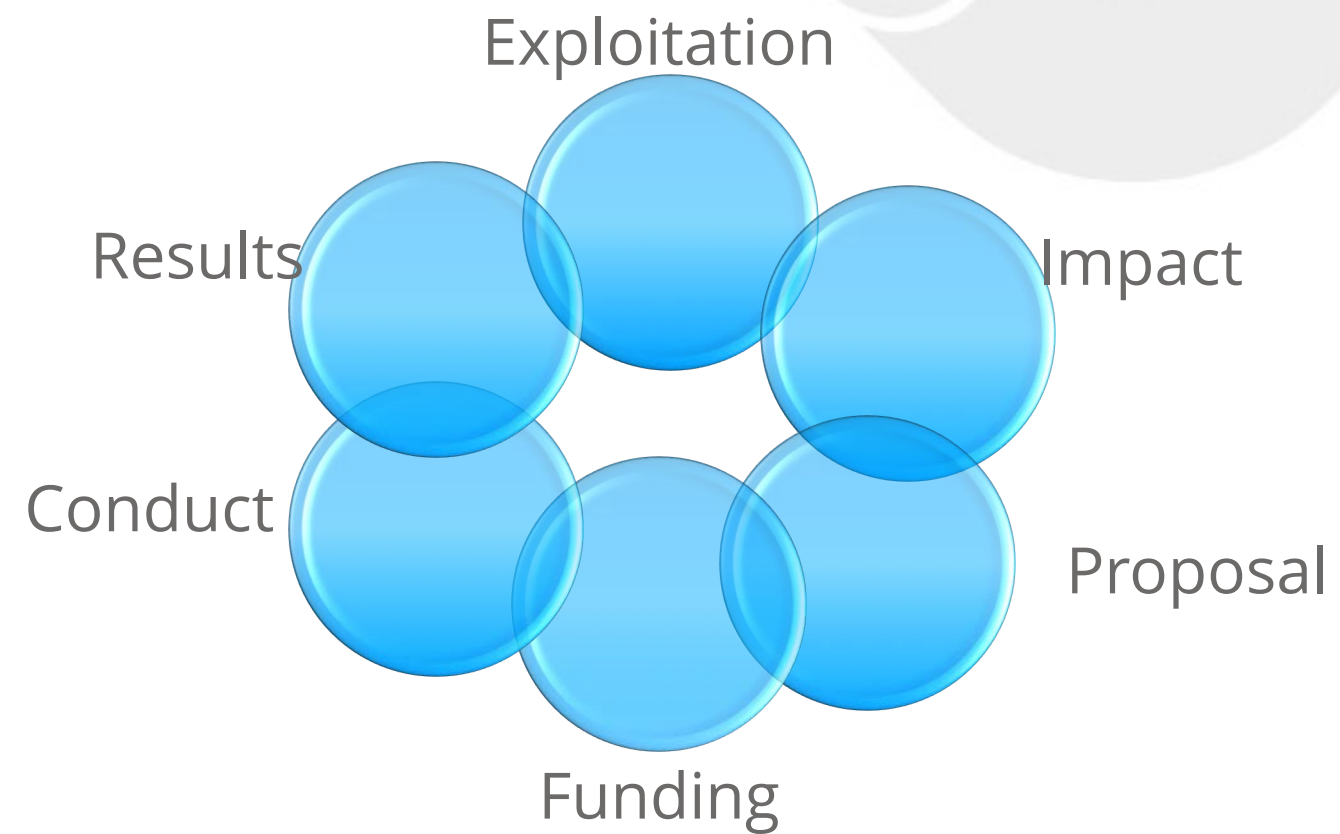
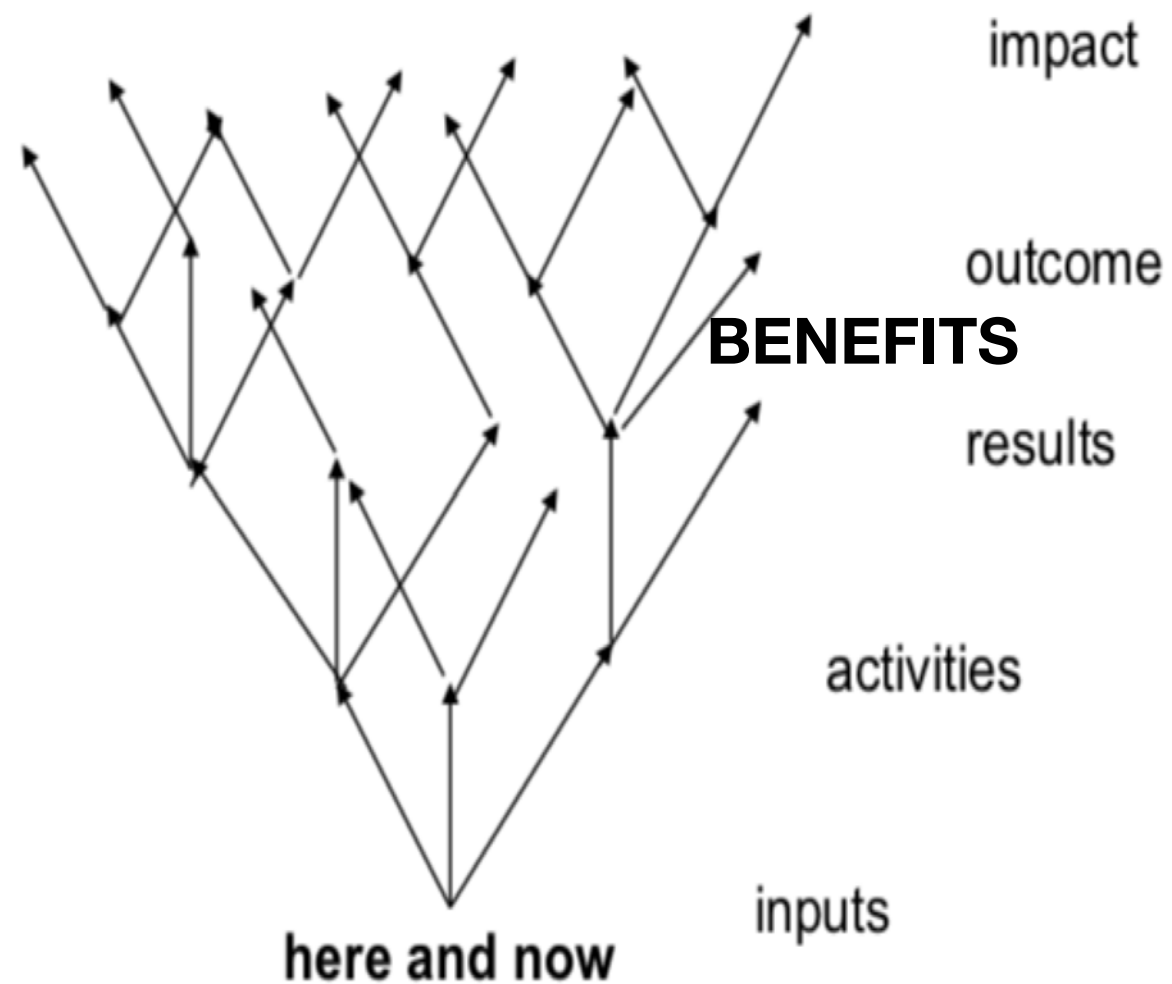
@CESSDA_Data



Contents

- ◊ Impact
 - ◊ Benefits
- ◊ Sustainability

Impact



First: Benefits

For Service Providers	
Planned	Status
Visible In Brussels eligible for funding, status of 'trusted repositories'	Grants, EOSC 'Trusted' = CoreTrustSeal
Set standards metadata, persistent identifiers	DDI, CMM Working on suite of PIDs
Develop partnerships Other RIs, Nat. Stats, 3 rd parties	Cooperation with e-Infras and third parties
Joint Activities Safe and Secure Data Infra Joint Research & Innovation	Work Plan & EC Projects Two initiatives (NO, ERAN)

First: Benefits

For Researchers	
Planned	Status
FAIR data	Data Catalogue
Single point of access	SP Archives
Quality of documentation	? Quality checks by SP's
Tools for Constructing metadata Secure storage for sensitive data Connect data to journal articles Fulfil grant obligations Increased visibility, higher usage	Work Plan Projects
Training	Data Discovery, Data Management Online Seminars on specific data

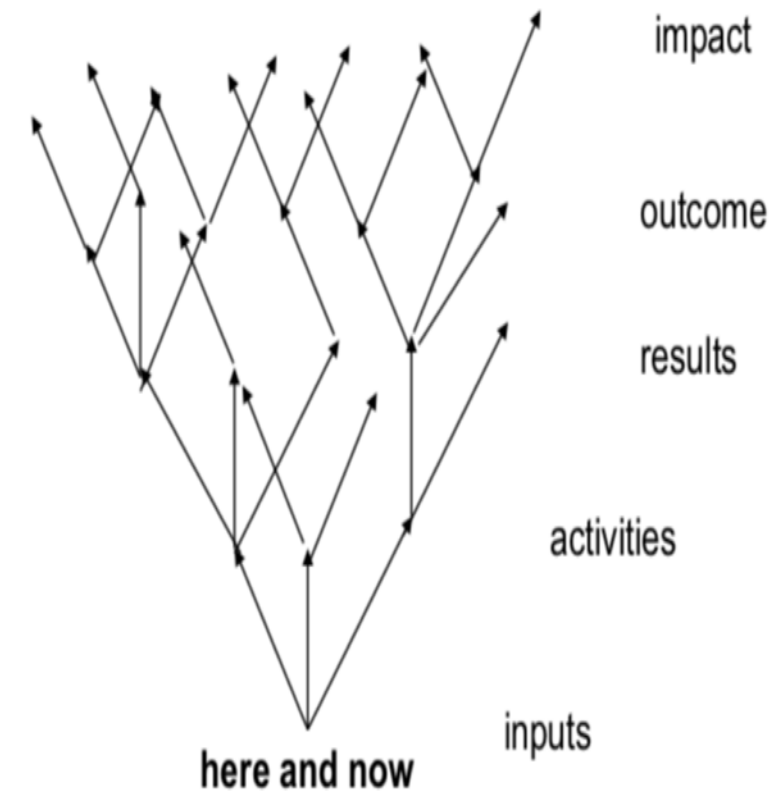
First: Benefits

For Members	
Planned	Status
No re-creation or loss of data Reduce duplication of effort	Providing deposit and archiving services, and catalogue to find data
Re-purposing data for new audiences	? Upcoming in new EC project for SSH - SSHOC
Lower archiving and data management costs	Joining CESSDA will induce scale efficiencies

First: Benefits

For Society	
Planned	Status
Value added over time as collection grows and develops	SPs already archive data for over 50 years
Enable international comparisons, visibility, and use	Surveys comparable by design; CESSDA tools for comparing other international studies
Induce new research and innovation, use across user communities	Via Data Catalogue and Data Clusters; two pilots (elections and migration) in new EC project
Research integrity - others can check the outcomes of research	TBD: facilitate and promote reproducibility of research

Impact: difficult to quantify



Impact is about the differences in the outcomes and results with and without CESSDA

ESFRI (WG) and ERIC-FORUM are working on Key Performance Indicators



Sustainability

- ◈ Financial: Funding, Viable Business models
- ◈ Organisational Tasks, Procedures, Staff
- ◈ Technical Platforms, Backbone, Standards
- ◈ Legal Governance, IPR, procurement
- ◈ Certification: Contribution to reliability and durability

Parameters: Small vs. Big

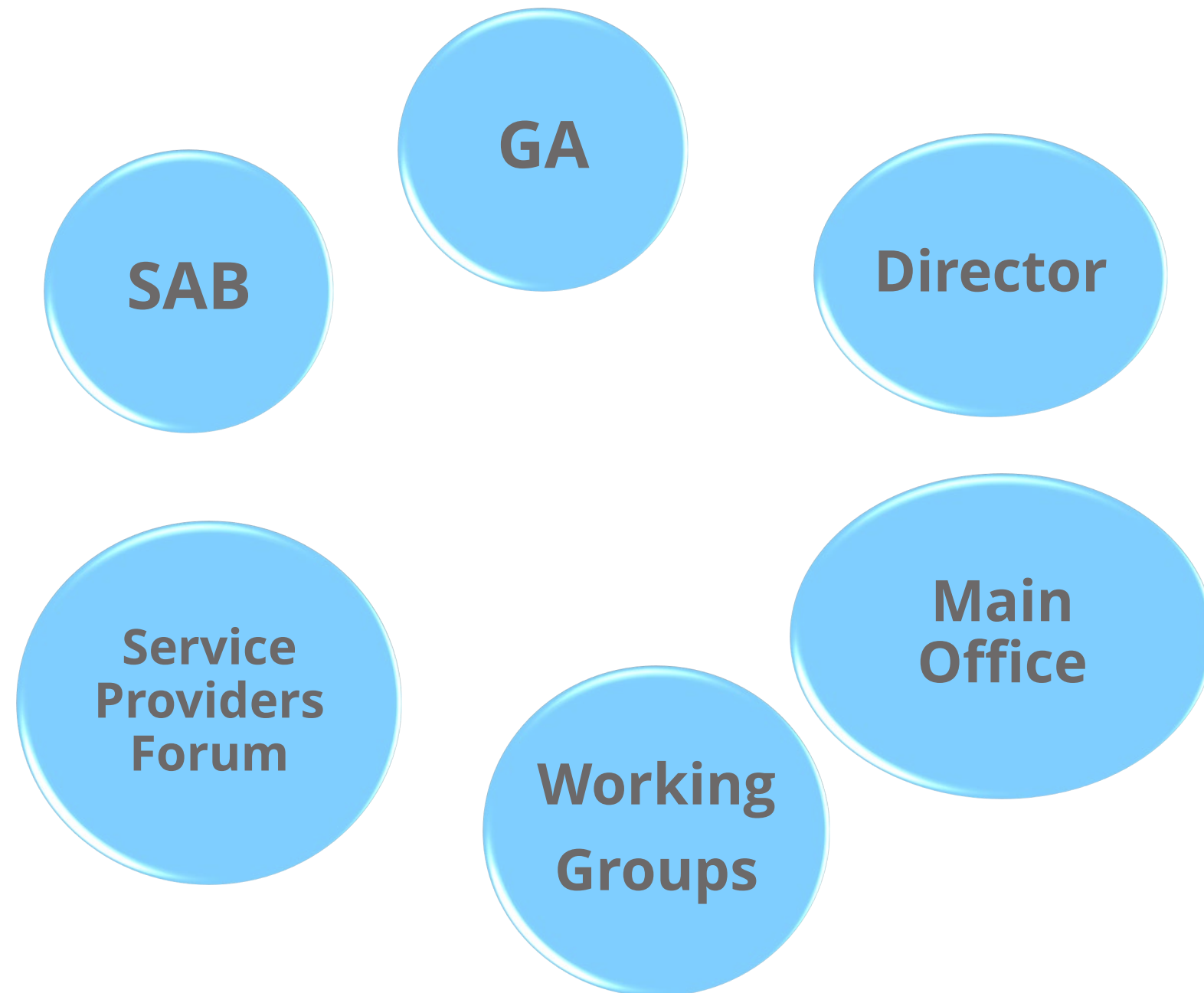
- ◆ Membership
- ◆ Nodes/SPs
- ◆ Staff
- ◆ Facilities
- ◆ No. of projects
- ◆ Etc.



Parameters: Single vs. Distributed



Parameters: Organisation & Governance



Parameters: Value Proposition

On Site Facilities

Access to Data

	A	B	C	D	E	F	G	H	I	J	K	L	M	N	O	P	Q	R
1	Name	UID	Score	Q1	Q2	Q3	Q4	Q5	Q6	Q7	Q8	Q9	Q10	Q11	Q12	Q13	Q14	Q15
2	Key			D	A	A	B	D	A	D	B	B	D	B	A	C	A	C
3	STUDENT A.A.	000000001	184	D	A	A	B	D	A	D	B	B	D	B	A	C	A	C
4	STUDENT B.B.	000000002	180	D	A	A	B	D	A	D	B	B	D	B	A	C	A	C
5	STUDENT C.C.	000000003	156	D	A	A	B	D	A	D	B	C	D	B	A	C	A	C
6	STUDENT D.D.	000000004	160	D	A	A	B	D	A	C	B	B	D	A	A	C	A	C
7	STUDENT E.E.	000000005	152	D	B	A	B	D	A	C	B	B	D	B	A	C	A	C
8	STUDENT F.F.	000000006	164	D	B	A	B	D	A	B	B	B	D	B	A	C	A	C
9	STUDENT G.G.	000000007	168	D	A	A	B	D	A	C	B	A	D	B	A	C	A	C
10	STUDENT H.H.	000000008	136	D	A	A	B	D	A	B	B	B	C	A	A	C	A	C
11	STUDENT I.I.	000000009	180	D	A	A	B	D	A	B	B	B	D	B	A	C	A	C
12	STUDENT J.J.	000000010	180	A	A	A	B	D	A	D	B	B	D	B	A	C	A	C
13	STUDENT K.K.	000000011	136	D	B	C	B	D	A	D	B	C	D	A	A	C	A	C
14	STUDENT L.L.	000000012	132	A	A	A	B	D	A	C	B	B	D	B	A	C	A	A
15	STUDENT M.M.	000000013	160	D	B	A	B	D	A	D	B	B	D	B	A	C	A	C
16	STUDENT N.N.	000000014	136	D	A	A	B	D	A	C	B	B	A	A	A	C	A	C
17	STUDENT O.O.	000000015	168	D	A	A	B	D	A	C	B	B	C	B	A	C	A	C
18	STUDENT P.P.	000000016	168	A	A	A	B	D	A	D	B	B	D	B	A	C	A	C
19	STUDENT Q.Q.	000000017	140	D	A	A	B	D	A	A	A	B	D	A	A	C	A	C
20	STUDENT R.R.	000000018	176	D	A	A	B	D	A	B	B	B	D	B	A	C	A	C
21	STUDENT S.S.	000000091	196	D	A	A	B	D	A	D	B	B	D	B	A	C	A	C
22	STUDENT T.T.	000000020	136	D	B	C	B	D	A	C	B	B	C	B	A	C	A	C



Remote Access



Training



Policies on Sustainability

- ◊ ESFRI
 - ◊ Working Group 2017, 2019
 - ◊ Scripta II Study
- ◊ EC Projects
 - ◊ INROAD – on Business Models
- ◊ OECD
 - ◊ Coordination of RI Policies
 - ◊ Sustainable Business Models

EC on sustainability of RIs

EC Working document (September 2017) with 42 recommendations

- Scientific excellence;
- Human capital;
- Data;
- Innovation;
- Socio-economic impact;
- Governance and funding;
- European and national coordination.

https://ec.europa.eu/research/infrastructures/pdf/ri_policy_swd-infrastructures_2017.pdf



ESFRI: Scripta Volume II

'Long-Term Sustainability of Research Infrastructures

ESFRI WG 35 recommendations in 7 key areas (2017)

1. Establish and maintain excellence;
2. Ensure that RI's have the right people in the right place;
3. Harmonise and integrate a vision for convergent operation of RIs and e-Infra's;
4. Fully exploit the potential of RI's as innovation hubs;
5. Set up effective means of determining economic and wider social value of RI's;
6. Establish conditions for effective governance and sustainable long-term funding;
7. Foster broader coordination at national and European levels;



OECD - Coordination of RI's policies and evaluation plans

OECD Global Science Forum Expert Group
on “Reference Framework for assessing the socio-economic impact of RI's”
(Paris, 19-20 March 2018):

1. Connect impact more closely with KPIs.
2. Main categories: performance, impact, time.
 - a. Core KPIs for **performance** and monitoring the activities of the RI;
 - b. Core Impact Indicators to indicate levels of **impact**
which should have little or no value in measuring performance;
 - c. Indicators, which are open and mostly meaningful in comparison **over time** in an RI.

Focus in this discussion is on large-scale RIs – usually physical and experimental.
This might be disadvantageous for distributed RIs.

What about CESSDA?

- ◆ Participate in Policy Discussions
 - ◆ ESFRI, OECD, EOSC, EC
- ◆ Follow up from SaW Project
 - ◆ CoreTrustSeal
 - ◆ Quality Assessment
- ◆ Keep up the good work

Milestones

◆ Data Catalogue



14379 results found in 49ms

◆ Training



Upcoming training events and archive of past events

EVENT CALENDAR



Access to training materials and resources

TRAINING RESOURCES

◆ Trust



◆ Technology



EOSC

The European Open Science Cloud

CESSDA

Tools & Services

	TOOLS & SERVICES	Data Users	Data Producer	Service Providers	Members
Available	CESSDA Data Catalogue	X			
	CESSDA Metadata Harvester			X	
	CESSDA Metadata Profile			X	
	CESSDA Data Management Expert Guide		X		
	CESSDA Knowledge Exchange (Intranet)			X	
2018	Social Sciences Common Vocabulary Manager			X	
	Social Sciences Multilingual Thesaurus			X	
	Social Sciences Multilingual Question Bank	X	X		
2019	CESSDA Quality Assurance				X
	CESSDA Self-Archiving		X		
	Single Sign On	X	X	X	
	CESSDA Access to Sensitive Data	X			
2020	Social Sciences Data Discovery Tools	X			
	Social Sciences Research Data Management		X		
	CESSDA Data Tags		X	X	



#keep on pushing

Ivana.Versic@cessda.eu

Ron.Dekker@cessda.eu

 cessda.eu

 @CESSDA_Data

